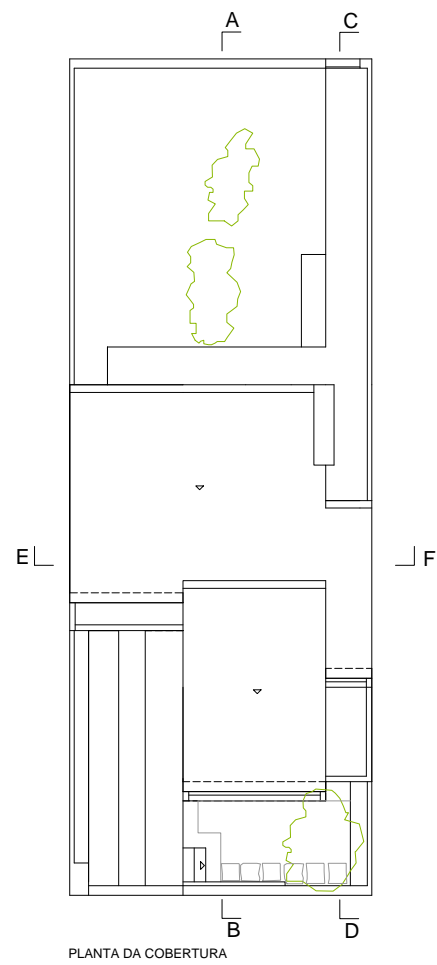
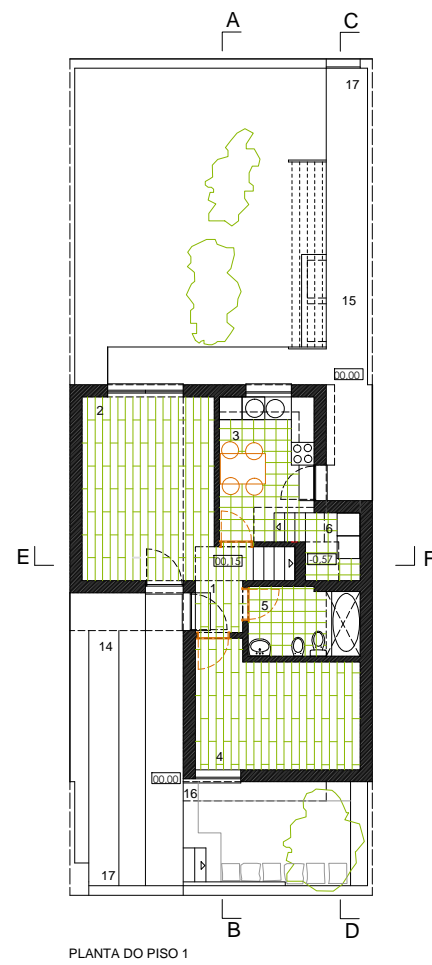


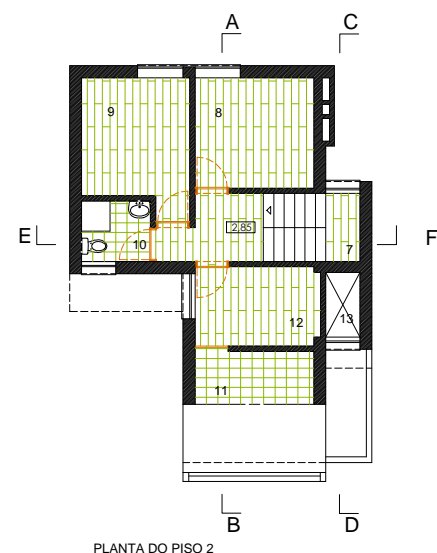
PROJETO TIPO - URBANIZAÇÃO S.BRÁS
TIPOLOGIA T4



PLANTA DA COBERTURA



PLANTA DO PISO 1

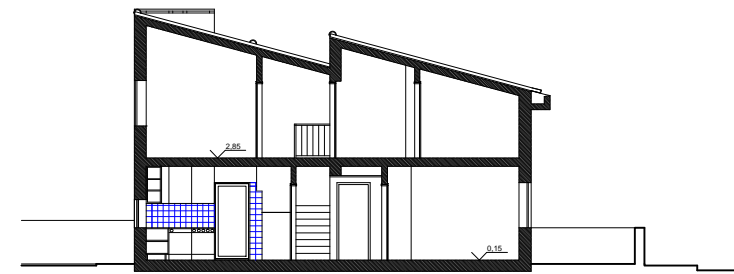


PLANTA DO PISO 2

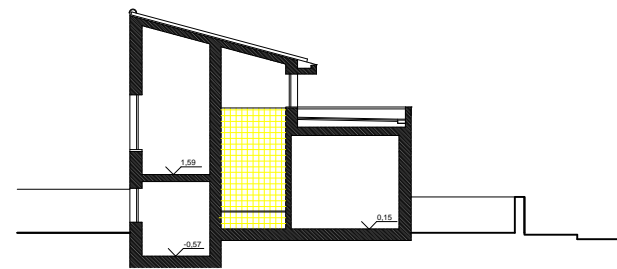
LEGENDA		
compartimento	área m2	
1 entrada	3,09	
2 sala comum	16,54	
3 cozinha	9,41	
4 quarto I	13,21	
5 instalação sanitária I	5,31	
6 lavandaria	2,61	
7 circulação	9,77	
8 quarto II	9,17	
9 quarto III	9,55	
10 instalação sanitária II	2,91	

11 arrumos	8,72
12 quarto IV	6,90
13 vazio	
14 estacionamento privativo	
15 armários gás/lixo	
16 logradouro	
17 portão	
Área habitável	64,79
Área útil	92,88
Área bruta	113,29
Área implantação	65,27

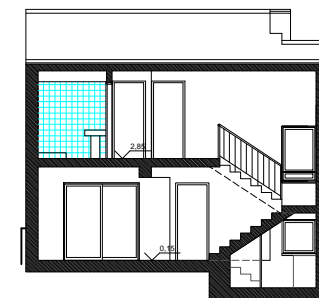
	Soalho Flutuante
	Mosaicos



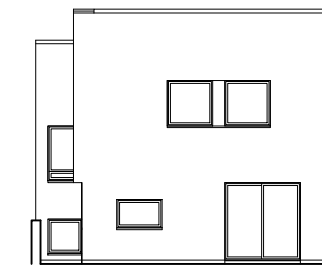
CORTE AB



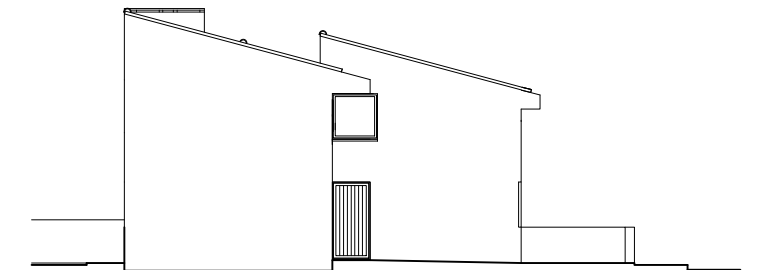
CORTE CD



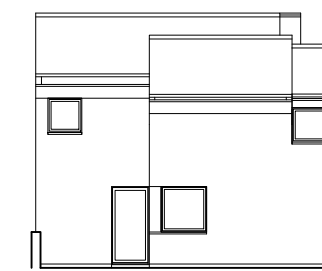
CORTE EF



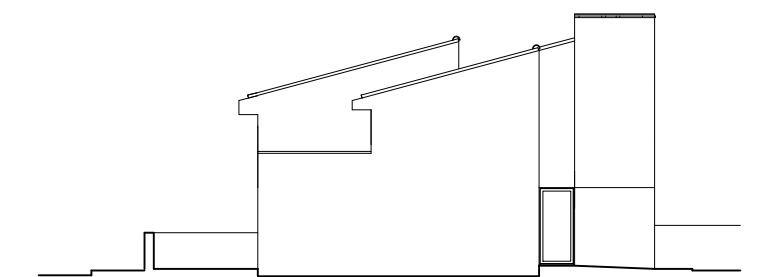
ALÇADO NASCENTE



ALÇADO NORTE



ALÇADO POENTE



ALÇADO SUL

