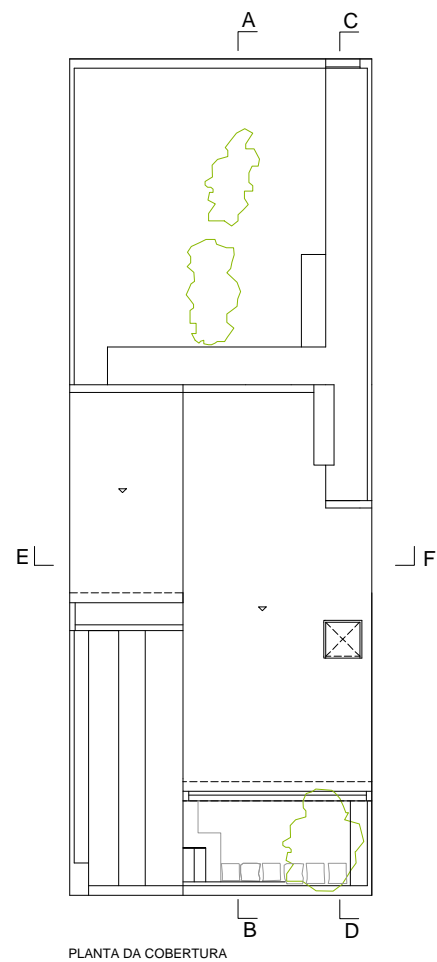
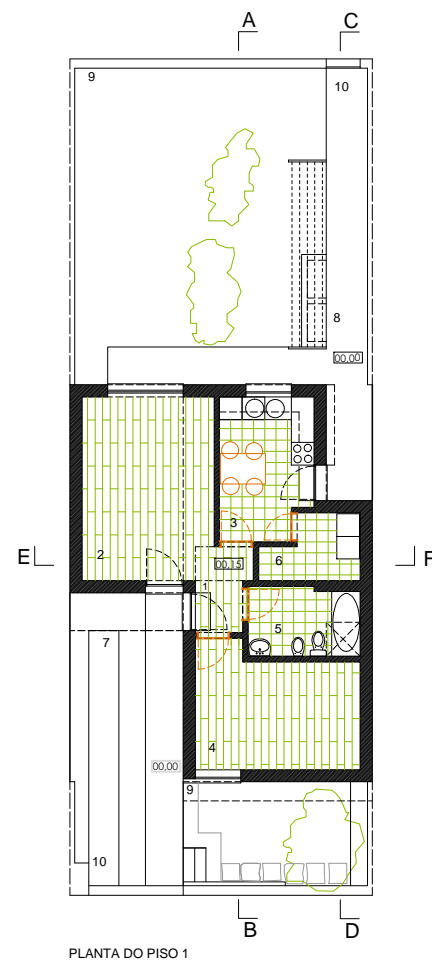


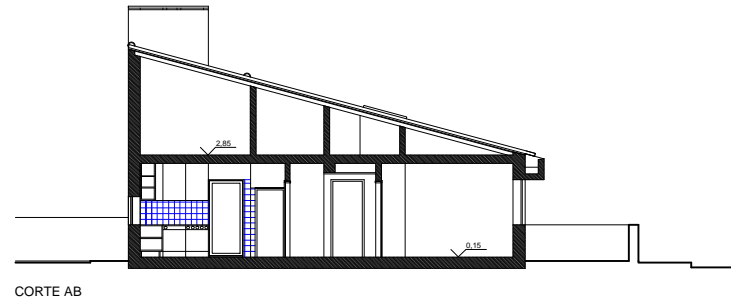
PROJETO TIPO - URBANIZAÇÃO S.BRÁS  
TIPOLOGIA T1



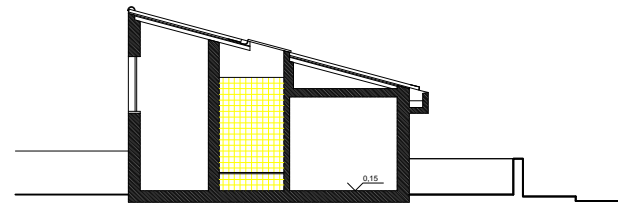
PLANTA DA COBERTURA



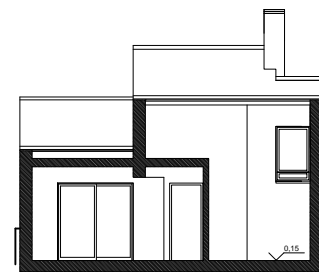
PLANTA DO PISO 1



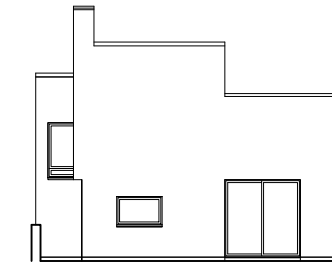
CORTE AB



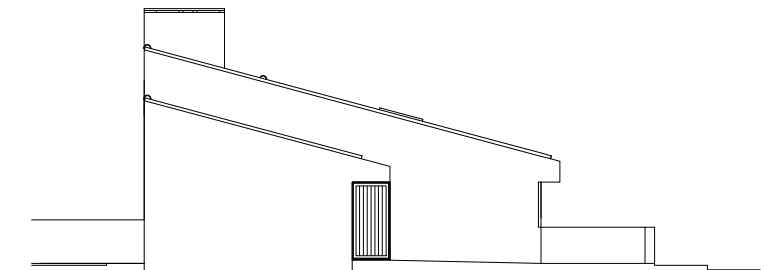
CORTE CD



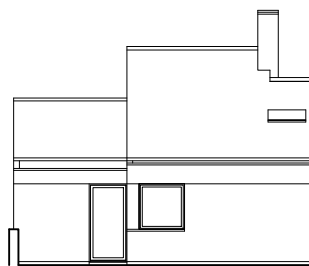
CORTE EF



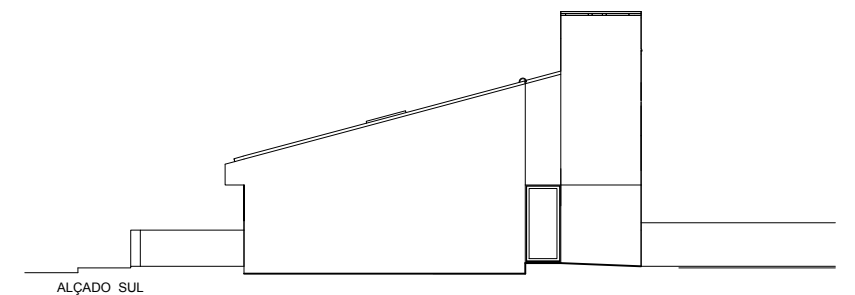
ALÇADO NASCENTE



ALÇADO NORTE



ALÇADO POENTE



ALÇADO SUL

LEGENDA		
compartimento	área m2	
1 entrada	3,09	
2 sala comum	16,54	
3 cozinha	9,41	
4 quarto I	13,21	

5 instalação sanitária I	5,3100
6 lavandaria	3,92
7 estacionamento privativo	
8 armários gás/lixo	
9 logradouro	
10 portão	

Área habitável	39,17
Área útil	51,49
Área bruta	65,27
Área implantação	65,27
Soalho Flutuante	
Mosaicos	

